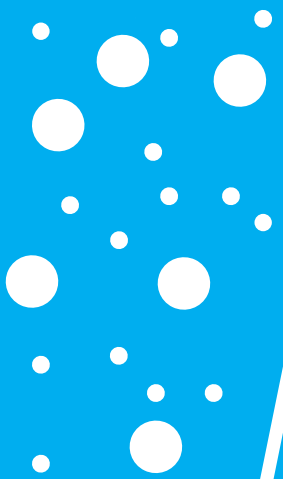


Capture



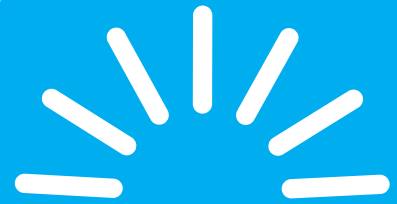
Capture dust before it escapes into a work area by using properly designed, installed, approved and maintained dust collection systems.

Contain



Contain dust within equipment, systems or rooms that are built and operated to safely handle combustible dust.

Clean



Clean work areas, overhead surfaces and concealed spaces frequently and thoroughly using safe housekeeping methods to remove combustible dusts not captured or contained.

Who is responsible for what?

Employers should determine whether dusts present in the workplace are combustible. If so, they must take proper precautions to protect workers against flash fires and explosions.

Workers must be protected from combustible dust flash fire and explosion hazards. Supervisors should be notified if proper precautions have not been taken to protect workers from combustible dust hazards.

Dust Control Measures

The dust-containing systems (ducts and dust collectors) are designed in a manner that fugitive dusts are not allowed to accumulate in the work area. The facility has a housekeeping program with regular cleaning frequencies established for floors and horizontal surfaces, such as ducts, pipes, hoods, ledges, and beams, to minimize dust accumulations within operating areas of the facility. The working surfaces are designed in a manner to minimize dust accumulation and facilitate cleaning.

Potentially Combustible Dusts

charcoal	cellulose
coal	corn
lampblack	egg white
lignite	fertilizer
aluminum	flour
iron	powdered milk
magnesium	soy flour
titanium	spices
zirconium	starch
epoxy resin	sugar
melamine	tobacco
phenolic resin	wood dust
polyethylene	biosolids
polypropylene	dyes
soap	pharmaceuticals
sulfur	rubber